



# PRODUCT CATALOG

**DELIVERING  
THE BEST  
EVERY TIME**

[www.ghaurityres.com](http://www.ghaurityres.com)







# PRESTIGE CAN ONLY BE EARNED





# ABOUT US

**Established in 1998, Ghauri Tyres is among the pioneers of tire industry in Pakistan. Our unwavering commitment to quality and service delivery has ensured 100% customer satisfaction. Ghauri Tyres is hailed among the most trustworthy and credible tire brands in Pakistan.**

**We have grown many folds over time with an installed production capacity of 7 million tires and 9 million tubes per annum. We proudly serve two-wheel and three-wheel segments, manufacturing excellent tires and tubes for Motorcycles, Scooters, E-Bikes, Bicycles, Rickshaws, ULT and Wheel Barrow.**

**Our tires and tubes are highly sought after in the market owing to their durability, millage, stability and tread designs.**

**Ghauri Tyres, with its global ambition, is exporting its products to more than 10 destinations in Asia. With a deep focus on development of superior products, we are now aiming to increase our global footprint by expanding our network to Africa, Europe and South America.**

**To our customers, we ensure excellent quality, cutting edge products and value for their money.**







LEADING TO  
SUCCESS





**GHAURI**  
TYRES







# MOTORCYCLE TYRES



## SPORTS

With a sporty twist to time tested block design, this profile provides uncompromised road grip and ride stability. Meticulously designed grooves provide excellent water dispersion capability to enhance rider safety on wet roads.

TYRE SIZE	PR	Weight/Tolerance	Sec-with (mm)	Load / Speed Index	Max Pressure (PSI)
2.50-17 R	6	1.950	65	45 L	41
2.50-18 R	6	2.150	65	45 L	41
2.75-18 R TL	6	2.400	75	48 L	41
3.00-17 R	6	2.700	80	50 L	41
3.00-18 R TL	6	2.800	80	52 L	41
90/90-18 R TL	6	3.150	90	51 L	35
100/90-18 R TL	6	4.150	101	62 L	41

## ZOOM

Especially designed for extra ordinary safety and road grip features, Zoom provides a blend of smooth ride, cornering ability and braking support. Excellent cornering ability provides agile riding experience.

TYRE SIZE	PR	Weight/Tolerance	Sec-with (mm)	Load / Speed Index	Max Pressure (PSI)
2.50-17 R	8	2.050	65	43 L	41
3.00-17 R	8	2.800	80	50 L	41
90/90-18 R TL	6	3.150	90	62 L	41
100/90-18 R TL	6	4.150	101	62 L	41







# MOTORCYCLE TYRES



## CLASSIC

A modern and sleek adaption of classic shoulder block design with a central rib, this profile uniquely blends fuel efficiency and superior road grip. Special diamond laced blocks on shoulders provide extra grip while cornering; enhancing safety and comfort.

TYRE SIZE	PR	Weight/Tolerance	Sec-with (mm)	Load / Speed Index	Max Pressure (PSI)
2.75-17 RTL	6	2.300	75	45 L	41
2.75-18 RTL	6	2.400	75	48 L	41

## TRAIL SAFARI 4

Designed for strength and stability, this profile boasts wider teeth to maximize grip and stability for extreme off-roading

TYRE SIZE	PR	Weight/Tolerance	Sec-with (mm)	Load / Speed Index	Max Pressure (PSI)
3.00-18 RTL	6	2.800	80	52 L	41





# MOTORCYCLE TYRES



## CLASSIC

A modern and sleek adaption of classic shoulder block design with a central rib, this profile uniquely blends fuel efficiency and superior road grip. Special diamond laced blocks on shoulders provide extra grip while cornering; enhancing safety and comfort.

TYRE SIZE	PR	Weight/Tolerance	Sec-with (mm)	Load / Speed Index	Max Pressure (PSI)
2.50-17 R	6	1.950	65	43 L	41
3.00-17 R	6	2.700	80	50 L	41

## LOGLIFE / CHAMPION

A unique and modern profile for the modern city streets. Long-life provides great stability, smoothness and ride comfort. Its increased surface area ensures sufficient road grip and safety.

TYRE SIZE	PR	Weight/Tolerance	Sec-with (mm)	Load / Speed Index	Max Pressure (PSI)
2.50-17 R	6	1.950	65	43 L	41
3.00-17 R	6	2.700	80	50 L	41



## RIDER

Modern block design of Rider provides excellent surface contact area to enhance ride stability and road grip. Unique profile supports frequent braking on traffic packed city roads

TYRE SIZE	PR	Weight/Tolerance	Sec-with (mm)	Load / Speed Index	Max Pressure (PSI)
2.50-17 R	8	2.050	65	43 L	41





# MOTORCYCLE TYRES



## OLYMPIC

Bold block profile of Olympic provides enhanced stability and road grip with durability and long life of the tire

TYRE SIZE	PR	Weight/Tolerance	Sec-with (mm)	Load / Speed Index	Max Pressure (PSI)
2.50-17 R	8	2.050	65	43 L	41

## KING

King is another multi-block pattern providing stability, durability and road grip. Special compounding and unique tread design provides safer and smoother rides.

TYRE SIZE	PR	Weight/Tolerance	Sec-with (mm)	Load / Speed Index	Max Pressure (PSI)
2.50-17 R	8	2.050	65	43 L	41



## EAGLE

Multi-block profile of Eagle is designed for improved road grip and ride stability. Equally effective in dry and wet conditions, the unmatched braking ability of this profile ensures ride safety

TYRE SIZE	PR	Weight/Tolerance	Sec-with (mm)	Load / Speed Index	Max Pressure (PSI)
2.50-17 R	8	2.050	65	43 L	41
3.00-17 R	8	2.800	80	50 L	41



# MOTORCYCLE TYRES



## TIGER

Tiger is designed for additional support while braking and overall feel of superior road grip on the city streets. Enhanced cornering ability provides agility while navigating through bustling city traffic

TYRE SIZE	PR	Weight/Tolerance	Sec-with (mm)	Load / Speed Index	Max Pressure (PSI)
2.50-17 R	6	1.950	65	43 L	41
2.50-18 R	6	2.150	65	45 L	41
3.00-17 R	6	2.700	80	50 L	41

## CONTINENTAL

An adaptation of our trade mark Classic-2 pattern, Continental provides enhanced road grip and cornering ability

TYRE SIZE	PR	Weight/Tolerance	Sec-with (mm)	Load / Speed Index	Max Pressure (PSI)
2.50-17 R	6	1.950	65	43 L	41



## LONG LIFE

A Unique and modern profile for the modern city streets. Long-Life provides great stability smoothness and ride Comfort. Its increased surface area ensures sufficient road grip and safety.

TYRE SIZE	PR	Weight/Tolerance	Sec-with (mm)	Load / Speed Index	Max Pressure (PSI)
2.50-17 R	6	1.950	65	45 L	41
2.50-18 R	6	2.150	65	45 L	41





# MOTORCYCLE TYRES



## SUPER SONIC

This profile is famous for its durability, stability and all-weather application. The tire provides maximum millage and strength while ensuring safety.

TYRE SIZE	PR	Weight/Tolerance	Sec-with (mm)	Load / Speed Index	Max Pressure (PSI)
2.50-17 R	6	1.950	65	45 L	41
2.50-18 R	6	2.150	65	45 L	41
3.00-17 R	6	2.700	80	50 L	41

## GOLD

Crafted with an advanced rubber compound, this tire delivers exceptional road grip, enhanced safety, and superior rider comfort. Its robust tread design maximizes road contact, providing a smoother, more secure ride, perfect for those who demand both performance and reliability on every journey.

TYRE SIZE	PR	Weight/Tolerance	Sec-with (mm)	Load / Speed Index	Max Pressure (PSI)
2.50-17 R	8	2.050	65	43 L	41



## ROTATIONAL

With a unique laser profile design around a central rib, Rotational provides a comfortable riding experience on city roads. Blocks on the shoulders provide added stability while cornering at high speed.

TYRE SIZE	PR	Weight/Tolerance	Sec-with (mm)	Load / Speed Index	Max Pressure (PSI)
2.50-17 R	6	1.950	65	45 L	41
2.50-18 R	6	2.150	65	45 L	41
3.00-17 R	6	2.700	80	50 L	41





# MOTORCYCLE TYRES



## SPORTS PLUS

Designed for sporty looks and extra grip, this unique profile provides additional safety features for enthusiastic riders.

TYRE SIZE	PR	Weight/Tolerance	Sec-with (mm)	Load / Speed Index	Max Pressure (PSI)
3.00-17 R	6	2.700	80	43 L	41

## TRAIL SAFARI-1

Trail Safari's beautiful block design is specially designed to provide exceptional grip while off-roading. Multiple deep blocks claw onto the surface for extra ordinary stability on rough terrain.

TYRE SIZE	PR	Weight/Tolerance	Sec-with (mm)	Load / Speed Index	Max Pressure (PSI)
2.50-17 R	6	1.950	65	43 L	41
2.75-17 R	6	2.300	75	43 L	41
2.75-18 R	6	2.400	75	48 L	41
3.00-18 R	6	2.800	80	52 L	41



## TRAIL SAFARI-2

Trail Safari - 2 is a uniquely designed profile for mud and gravel applications during off-roading. Compartmentalized block design ensures extra stability during off-roading. Carefully spaced teeth ensure that mud or gravel don't get stuck in the tire.

TYRE SIZE	PR	Weight/Tolerance	Sec-with (mm)	Load / Speed Index	Max Pressure (PSI)
2.50-18 R	6	2.150	65	45 L	41





# MOTORCYCLE TYRES



## TRAIL SAFARI-3

With wider and more spacious block design, this profile provides flexibility and comfort on off-road tracks

TYRE SIZE	PR	Weight/Tolerance	Sec-with (mm)	Load / Speed Index	Max Pressure (PSI)
3.00-17 R	6	2.700	80	50 L	41

## SPORTAGE

Sporty profile with enriched rubber compound, this tire is designed for enhanced road grip, safety and rider comfort. Bold block design improves road contact to ensure smoother and safer rides.

TYRE SIZE	PR	Weight/Tolerance	Sec-with (mm)	Load / Speed Index	Max Pressure (PSI)
2.50-17 R	6	1.950	65	43 L	41
2.50-18 R	6	2.150	65	45 L	41
2.75-17 RTL	6	2.300	75	43 L	41
2.75-18 R	6	2.400	75	48 L	41
3.00-17 R	6	2.700	80	50 L	41



## CLASSIC-1

A modern and sleek adaption of classic shoulder block design with a central rib, this profile uniquely blends fuel efficiency and superior road grip. Special diamond laced blocks on shoulders provide extra grip while cornering; enhancing safety and comfort.

TYRE SIZE	PR	Weight/Tolerance	Sec-with (mm)	Load / Speed Index	Max Pressure (PSI)
2.25-17 F	6	1.630	61	38 L	41
2.75-18 FTL	6	2.400	75	48 L	41







# MOTORCYCLE TYRES



## SPORTS

Intended to be used in pair with Sports (R) series, this profile is crafted for enhanced road grip and sporty looks

TYRE SIZE	PR	Weight/Tolerance	Sec-with (mm)	Load / Speed Index	Max Pressure (PSI)
2.25-17 F	6	1.630	61	38 L	41
2.50-18 F	6	2.150	65	45 L	41

## ONGLIFE

Designed for front wheel applications, this profile features cut blocks in the middle to increase road grip and braking ability without compromising smooth steering

TYRE SIZE	PR	Weight/Tolerance	Sec-with (mm)	Load / Speed Index	Max Pressure (PSI)
2.25-17 F	6	1.630	61	38 L	41
2.50-17 F	6	1.950	65	45 L	41



## TIGER

Intended to be used in pair with Tiger (R) series, this profile provides enhanced cornering ability and steering agility resulting in smoother ride on city streets

TYRE SIZE	PR	Weight/Tolerance	Sec-with (mm)	Load / Speed Index	Max Pressure (PSI)
2.25-17 F	6	1.630	61	38 L	41



# MOTORCYCLE TYRES



## SUPER SONIC

A modern adaption for front wheel application, this profile features continuous central ribs resulting in very smooth steering. Block pattern on shoulder improves grip while cornering.

TYRE SIZE	PR	Weight/Tolerance	Sec-with (mm)	Load / Speed Index	Max Pressure (PSI)
2.25-17 F	6	1.630	61	38 L	41
2.50-18 F	6	2.150	65	45 L	41

## CLASSIC 2

Designed for city streets, this classic profile provides an amazing blend of comfort and ride stability.

TYRE SIZE	PR	Weight/Tolerance	Sec-with (mm)	Load / Speed Index	Max Pressure (PSI)
2.50-18 F	6	2.150	65	45 L	41





# RIDE WITH STYLE





# SCOOTY TYRES



## SONIC

Designed to achieve superior road grip and rider safety without compromising smooth riding experience and fuel efficiency, this profile provides an excellent combination of a sleek design and safety features.

TYRE SIZE	PR	Weight/Tolerance	Sec-with (mm)	Load / Speed Index	Max Pressure (PSI)
3.00-10 TL	6	2.000	82	46 L	40

## THUNDER

This profile is particularly designed to provide road grip and ride stability. Big blocks of tire prevent slipping and provide extra grip during braking. Special rubber compound provides durability and ensures safety.

TYRE SIZE	PR	Weight/Tolerance	Sec-with (mm)	Load / Speed Index	Max Pressure (PSI)
3.50-10 TL	6	2.400	94	56 L	40
90.90-12 TL	6	2.550	90	59 L	40



## STORM

This pattern is designed to ensure smooth riding experience. Laser grooves help disperse water in wet conditions. Additional grooves on the shoulders provide support during cornering.

TYRE SIZE	PR	Weight/Tolerance	Sec-with (mm)	Load / Speed Index	Max Pressure (PSI)
100.90-10 TL	6	2.600	100	61 L	40





# SCOOTY TYRES



## X-STREET

Designed to rule the city street this pattern provide excellent combination of grip and efficiency. Deep water channels ensure smooth water dispersion in wet conditions.

TYRE SIZE	PR	Weight/Tolerance	Sec-with (mm)	Load / Speed Index	Max Pressure (PSI)
3.00-10 TL	6	2.000	82	49 L	40
3.50-10 TL	6	2.400	94	51 L	40
90.90-12 TL	6	2.750	90	59 L	40

## PROCITY

This profile achieves superior road grip while riding and braking. Special compound helps prevent slippage.

TYRE SIZE	PR	Weight/Tolerance	Sec-with (mm)	Load / Speed Index	Max Pressure (PSI)
3.00-10 TL	6	2.000	82	49 L	40
3.50-10 TL	6	2.400	94	51 L	40
90.90-12 TL	6	2.750	90	59 L	40



## E-CITY

Designed on E-bike specifications with the strength to support rapid acceleration and deceleration. Exerts minimum load on the motor to increase efficiency.

TYRE SIZE	Weight/Tolerance
14X2.50 TL	1350
16X2.50 TL	1450







# BICYCLE TYRES



## HEAVY DUTY-1

TYRE SIZE Weight/Tolerance

28X1 1/2

1060  $\pm$  10



## HEAVY DUTY-2

TYRE SIZE Weight/Tolerance

28X1 1/2

1060  $\pm$  10



## HEAVY DUTY-3

TYRE SIZE Weight/Tolerance

28X1 1/2

1060  $\pm$  10



## HEAVY DUTY-4

TYRE SIZE Weight/Tolerance

28X1 1/2

1060  $\pm$  10



## HEAVY DUTY-5

TYRE SIZE Weight/Tolerance

28X1 1/2

1060  $\pm$  10



## HEAVY DUTY-6

TYRE SIZE Weight/Tolerance

28X1 1/2

1060  $\pm$  10



# BICYCLE TYRES



## HEAVY DUTY-7

TYRE SIZE Weight/Tolerance

28X1 1/2

1060  $\pm$  10



## GOLD STONE

TYRE SIZE Weight/Tolerance

28X1 1/2

940  $\pm$  10



## SUPERME

TYRE SIZE Weight/Tolerance

28X1 1/2

940  $\pm$  10



## INDONESIA

TYRE SIZE Weight/Tolerance

28X1 1/2

1045  $\pm$  5



## PRINCE

TYRE SIZE Weight/Tolerance

28X1 1/2

940  $\pm$  10



## EAGLE

TYRE SIZE Weight/Tolerance

28X1 1/2

940  $\pm$  10





# BICYCLE TYRES



## K-2 CLASSIC

TYRE SIZE	Weight/Tolerance
-----------	------------------

28X1 1/2	940 $\pm$ 10
----------	--------------



## IRANI LOADER

TYRE SIZE	Weight/Tolerance
-----------	------------------

28X1 1/2	1045 $\pm$ 5
----------	--------------

26X2.00	1040 $\pm$ 10
---------	---------------

26X1 3/8	790 $\pm$ 10
----------	--------------

24X1 3/8	725 $\pm$ 5
----------	-------------



## LONG LIFE

TYRE SIZE	Weight/Tolerance
-----------	------------------

28X1 1/2	940 $\pm$ 10
----------	--------------

26X1 3/8	790 $\pm$ 10
----------	--------------

24X1 3/8	725 $\pm$ 5
----------	-------------

20X1 3/8	620 $\pm$ 10
----------	--------------



## RACER

TYRE SIZE	Weight/Tolerance
-----------	------------------

27X1-1/4	800 $\pm$ 10
----------	--------------



## ROCKY

TYRE SIZE	Weight/Tolerance
-----------	------------------

29X2.1	1040 $\pm$ 10
--------	---------------

26X2.125/1.95	1040 $\pm$ 10
---------------	---------------



## SPEED

TYRE SIZE	Weight/Tolerance
-----------	------------------

29X2.1	1040 $\pm$ 10
--------	---------------



# BICYCLE TYRES



## MTB/BMX-1

TYRE SIZE	Weight/Tolerance
-----------	------------------

26X2.125	1040 $\pm$ 10
26X1.95	1040 $\pm$ 10
20X2.125	905 $\pm$ 5
16X2.125	610 $\pm$ 10



## MTB/BMX-2

TYRE SIZE	Weight/Tolerance
-----------	------------------

26X2.125	1040 $\pm$ 10
20X2.125	905 $\pm$ 5



## MTB/BMX-3

TYRE SIZE	Weight/Tolerance
-----------	------------------

26X2.125	1040 $\pm$ 10
26X1.95	1040 $\pm$ 10
20X2.125	905 $\pm$ 5



## MTB/BMX-4

TYRE SIZE	Weight/Tolerance
-----------	------------------

26X2.125	1040 $\pm$ 10
26X1.95	1040 $\pm$ 10
20X2.125	905 $\pm$ 5
20X1.95	905 $\pm$ 5



## MTB/BMX-5

TYRE SIZE	Weight/Tolerance
-----------	------------------

26X2.125	1040 $\pm$ 10
20X2.125	905 $\pm$ 5



## MTB/BMX-6

TYRE SIZE	Weight/Tolerance
-----------	------------------

26X2.125	1040 $\pm$ 10
20X2.125	905 $\pm$ 5
20X1.95	905 $\pm$ 5





# BICYCLE TYRES



## TRACTOR

TYRE SIZE	Weight/Tolerance
-----------	------------------

26X2.125/1.95	1040 $\pm$ 10
---------------	---------------

24X1.95	1040 $\pm$ 10
---------	---------------



## TIGER

TYRE SIZE	Weight/Tolerance
-----------	------------------

26X2.125/1.95	1040 $\pm$ 10
---------------	---------------



## LUCKY

TYRE SIZE	Weight/Tolerance
-----------	------------------

26X2.125/1.95	1040 $\pm$ 10
---------------	---------------



## GRAVITY HD

TYRE SIZE	Weight/Tolerance
-----------	------------------

26X2.125/1.95	1040 $\pm$ 10
---------------	---------------



## RIDER

TYRE SIZE	Weight/Tolerance
-----------	------------------

26X2.125/1.95	1040 $\pm$ 10
---------------	---------------

26X1.75	1040 $\pm$ 10
---------	---------------

24X1.95	1010 $\pm$ 10
---------	---------------



## TIGER PLUS

TYRE SIZE	Weight/Tolerance
-----------	------------------

26X2.125/1.95	1040 $\pm$ 10
---------------	---------------

24X1.95	1040 $\pm$ 10
---------	---------------



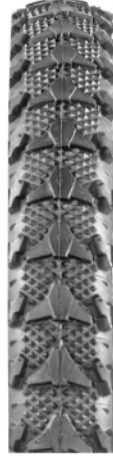
# BICYCLE TYRES



## ARROW-1

TYRE SIZE	Weight/Tolerance
-----------	------------------

26X2.125/1.95	1040 $\pm$ 10
20X2.125	905 $\pm$ 5



## DOUBLE ARROW

TYRE SIZE	Weight/Tolerance
-----------	------------------

20X2.125	950 $\pm$ 5
----------	-------------



## SRS

TYRE SIZE	Weight/Tolerance
-----------	------------------

20X2.125	905 $\pm$ 5
16X1.175	588 $\pm$ 12



## OMEGA

TYRE SIZE	Weight/Tolerance
-----------	------------------

20X2.125	905 $\pm$ 5
16X2.125	610 $\pm$ 10
16X1.175	588 $\pm$ 12



## TURBO

TYRE SIZE	Weight/Tolerance
-----------	------------------

20X3.00	1230 $\pm$ 20
16X3.00	1100 $\pm$ 20



 **GHAURI**  
TYRES







# RICKSHAW TYRES



## DISCOVERY

TYRE SIZE	PR	Weight/Tolerance	Sec-with (mm)	Load / Speed Index	Max Pressure (PSI)
4.00-8 TT/TL	8	2.900	109	215KG	35PSI

## COMMANDO

TYRE SIZE	PR	Weight/Tolerance	Sec-with (mm)	Load / Speed Index	Max Pressure (PSI)
4.00-8 TT/TL	8	2.900	109	215KG	35PSI



## SPORTS

TYRE SIZE	PR	Weight/Tolerance	Sec-with (mm)	Load / Speed Index	Max Pressure (PSI)
4.00-8 TT/TL	8	2.900	109	215KG	35PSI





# RICKSHAW TYRES



## SPORTS TRIANGLE

TYRE SIZE	PR	Weight/Tolerance	Sec-with (mm)	Load / Speed Index	Max Pressure (PSI)
4.00-8 TT/TL	8	2.900	109	215KG	35PSI

## SPORTS MRF

TYRE SIZE	PR	Weight/Tolerance	Sec-with (mm)	Load / Speed Index	Max Pressure (PSI)
4.00-8 TT/TL	8	2.900	109	215KG	35PSI



## OLYMPIC

TYRE SIZE	PR	Weight/Tolerance	Sec-with (mm)	Load / Speed Index	Max Pressure (PSI)
4.00-8 TL	8	2.900	109	215KG	35PSI









# TROLLY TYRES



## TRIANGLE

TYRE SIZE

PR

Weight/Tolerance

Sec-with (mm)

4.00-8 TT

6

2.400

106

## CHAMPION

TYRE SIZE

PR

Weight/Tolerance

Sec-with (mm)

3.00-8 TT

2

1.000

80



## TRACTOR

TYRE SIZE

PR

Weight/Tolerance

Sec-with (mm)

3.50-8 TT

4

1.700

92



# TROLLY TYRES



## LONG LIFE

TYRE SIZE	PR	Weight/Tolerance	Sec-with (mm)
3.50-8 TT	2	1.550	92

## SUPER

TYRE SIZE	PR	Weight/Tolerance	Sec-with (mm)
3.50-8 TT	2	1.550	92



## YAZD

TYRE SIZE	PR	Weight/Tolerance	Sec-with (mm)
3.50-8 TT	4	1.700	92





# TUBES

## MC (BUTYL TUBES)

SR. NO#	SIZE	Application	Type	Flat Width (mm)	Nozzal Type
1	2.25/50-17	70 cc Front/Rear	Natural / Butyl Rubber	65	TR-4
2	2.50-17	70 cc Front/Rear	Natural / Butyl Rubber	72	TR-4
3	2.50-18	100 cc Front/Rear	Natural / Butyl Rubber	72	TR-4
4	3.00-17	125 cc Rear	Natural / Butyl Rubber	84	TR-4
5	3.00-18	125 cc Rear	Natural / Butyl Rubber	84	TR-4
6	90/90-18	150 cc Rear	Natural / Butyl Rubber	92	TR-4
7	100/90-18	150 cc Rear	Natural / Butyl Rubber	92	TR-4

## BC TUBES

SR. NO#	Etrto Size	Inch Size	Type	Nozzal Type	Flat Width (mm)	
					Natural	Butyl
1	40-635	28x1-1/2	Natural / Butyl Rubber	TR 1 / VAR 28-32	43	43
2	32-630	27x1-1/4	Natural / Butyl Rubber	TR 1 / VAR 28-33	34	34
3	57-599	26x1.75/1.25	Natural / Butyl Rubber	TR 1 / VAR 28-34	56	43
4	50-559	26x1.75/1.25	Natural / Butyl Rubber	TR 1 / VAR 28-35	56	43
5	57-507	24x2.125	Natural / Butyl Rubber	TR 1 / VAR 28-36	56	43
6	57-406	20x2.125	Natural / Butyl Rubber	TR 1 / VAR 28-37	56	43
7	47-305	16x1.75	Natural / Butyl Rubber	TR 1 / VAR 28-38	56	43
8	37-590	26x1-3/8	Natural / Butyl Rubber	TR 1 / VAR 28-39	43	43
9	37-540	24x1-3/8	Natural / Butyl Rubber	TR 1 / VAR 28-40	43	-
10	37-451	20x1-3/8	Natural / Butyl Rubber	TR 1 / VAR 28-41	43	-

## SCOOTER, RICKSHAW TUBES

SR. NO#	SIZE	Application
1	3.50-8	Scooter
2	3.50-10	Scooter
3	4.00-8	Rickshaw
4	135-10	Rickshaw

## NATURAL TUBES WHEEL BARROW

SR. NO#	SIZE	Application
1	3.00-8	Wheel Barrow
2	3.50-8	Wheel Barrow
3	3.50/4.00-8	Wheel Barrow



 **GHAURI**  
TYRES





UNMATCHED  
QUALITY  
**UNRIVALED**  
PERFORMANCE




**GHAURI TYRE & TUBE (PVT) LTD.**

HEAD OFFICE & FACTORY  
146-M, Industrial Area Kot Lakhpat, Lahore Pakistan.  
TEL: 042 111 488 488

 [www.ghaurityres.com](http://www.ghaurityres.com)

 [/ghaurityres](https://www.facebook.com/ghaurityres)

 [/ghaurityres.official](https://www.instagram.com/ghaurityres.official)

 [ghaurityres.official](https://www.youtube.com/ghaurityres.official)